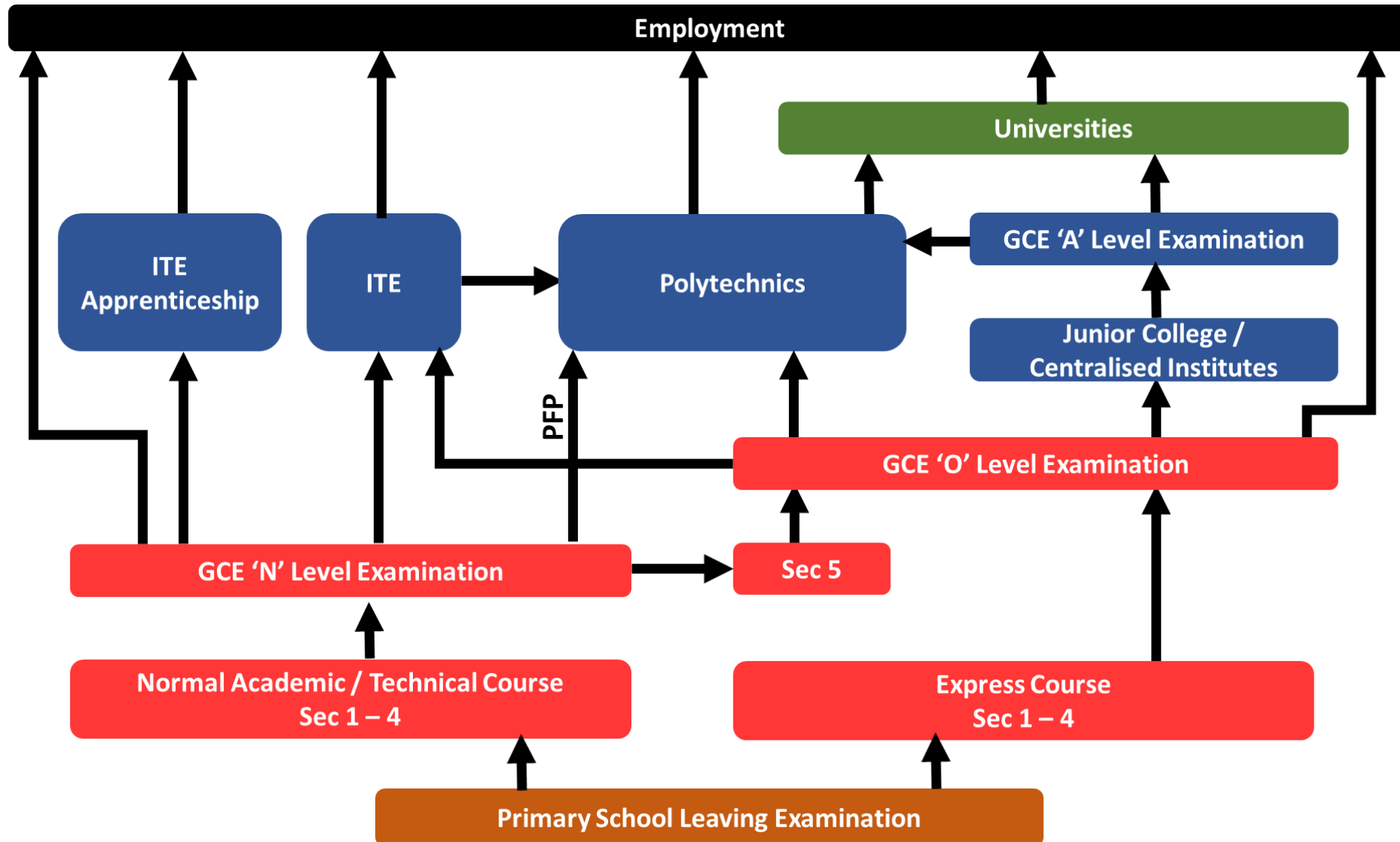




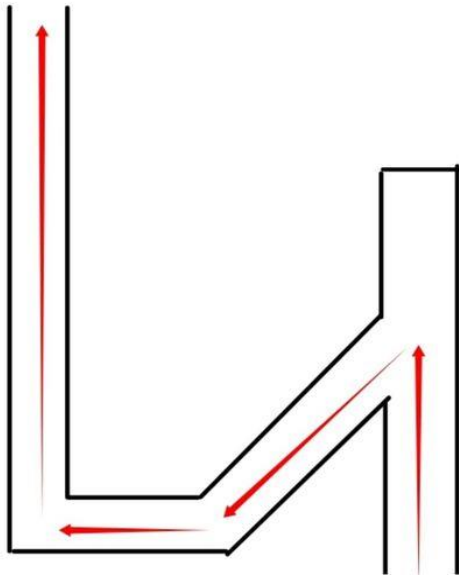
# **N Level Results Release**

**19 Dec 2022**

# Multiple Pathways to Learning




# Two Things to Bear in Mind



**The better road may not be the more obvious or popular one**



**Life is not about getting there first.  
It is about getting there**

A grid of white paper boats on a blue background. One red paper boat is positioned in the upper right quadrant, slightly offset from the grid. A dotted line connects the red boat to the text below it.

**Your circumstances can be challenging but  
how you make the best of these challenges is important.**

**When help comes your way,  
do not reject it.**

**Do not let pride rob you of the opportunity to succeed in life**

**Focus what you have, not what you don't**

**The best route is what you are prepared to stick with**

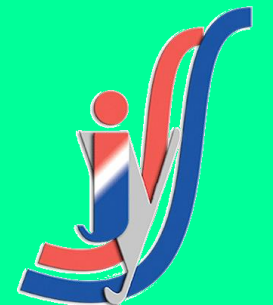


*Believe in yourself that you are good  
enough to succeed in life.  
Choose the right pathway that will  
make that happen.*



# Welcome Back!

Release of N-Level Results  
19 December 2022



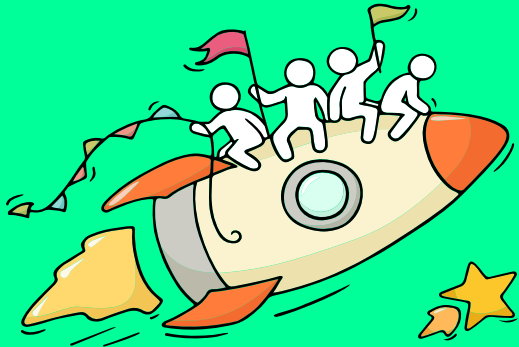
JUNYUAN SECONDARY SCHOOL



The N-Level is a culmination of years of your hard work and perseverance.

You encountered successes and overcame challenges together.

As we gather here today, let us all celebrate our efforts!



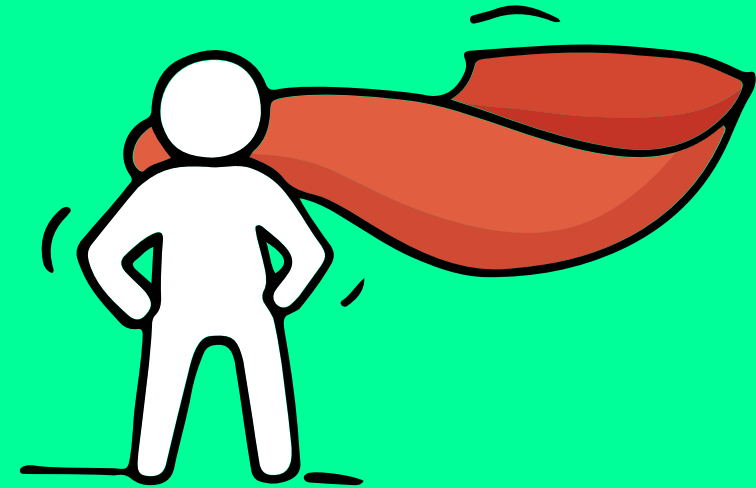
*Finally, we are going to get our results!*



# Think about your opportunities

As you await your GCE N-Level results, there are some possibilities:

- ☐ You are happy that your results meet or exceed your expectations or,
- ☐ You are worried/upset because your results fall short of your expectations.



Remember that **everyone's learning journey is different** but **we can each have a fulfilling outcome!**



# No matter the circumstances, there is always a way forward.

## Stop

- Calm yourself down. Take a few deep breaths.

## Think

- Think through the different options that are available for you. Keep things in perspective.
- Remember that the N-Level is one part of your life journey and not the destination.

## Do

- Approach a trusted adult and seek his/her help. Have a conversation with this person about what would be best for you.
- Make a decision and take action based on your options.

When you receive your results, you may experience a range of emotions.

Managing these emotions well will allow you to stay calm and make rational decisions.

# Reaching out for help is a sign of strength, not weakness.

If you have any concerns or are not coping, do reach out to someone you trust and speak with them. It could be a parent/guardian, teacher, School Counsellor or a friend that you can talk to.



**Keep a lookout for  
some of these signs  
in your peers or  
yourself.**

*How can we  
support one  
another?*



**D  
I  
S  
T  
R  
E  
S  
S**

Deliberately avoiding others

Increased irritability, restlessness, agitation,  
stress and anxiety

Sending or posting moody messages on social  
media

Talking about death or dying

Reacting differently or gradually losing interest  
in things they used to like

Eating more than usual or having a much  
reduced appetite

Sleep pattern changes with difficulty falling  
asleep or oversleeping

Slowing down of energy levels

If you notice any of these signs in yourself or your friends,  
**have a chat with your school counsellor or teacher**

Or contact SOS 24-hour hotline at **1800-221-4444**



Ministry of Education  
Singapore

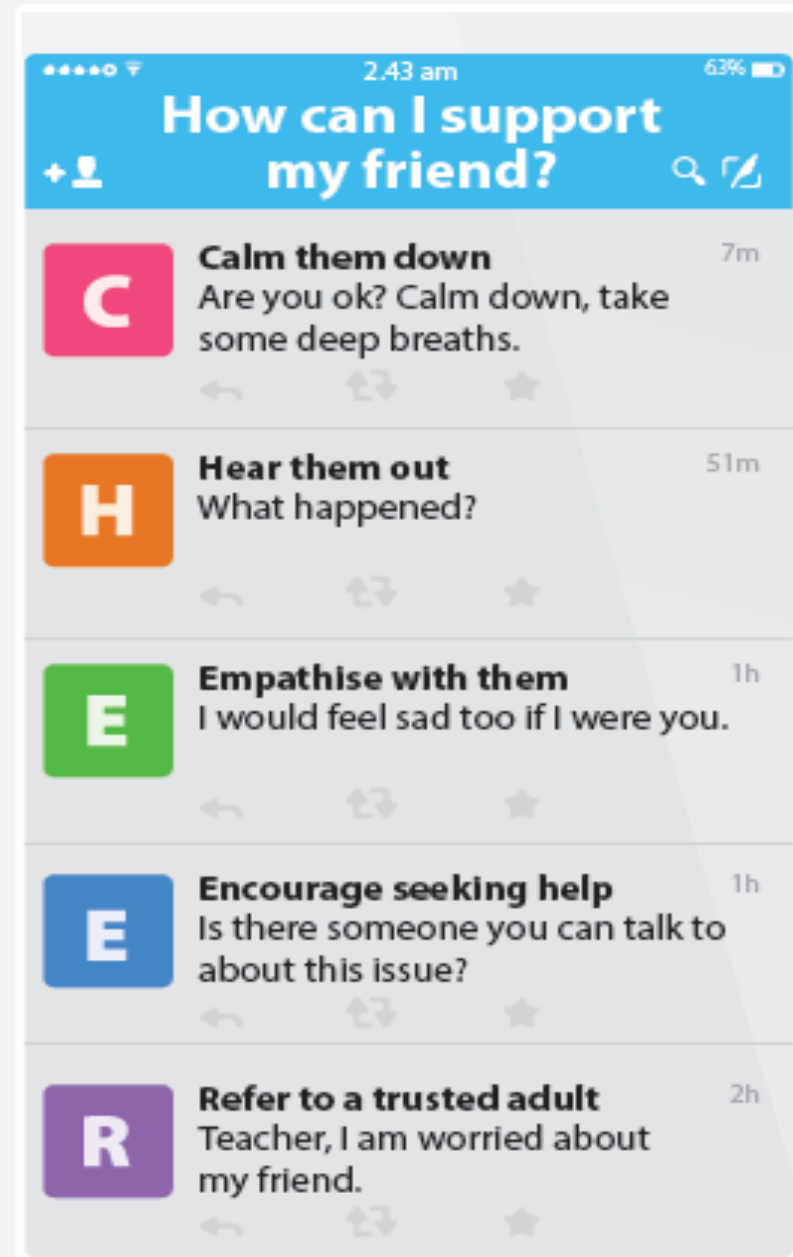
© 2020 Guidance Branch, Student Development Curriculum Division (SDCD), Ministry of Education, Singapore. No part of this final product may be reproduced or transmitted in any form or by any means, electronic or mechanical, including photocopy, recording or any other information storage and retrieval system, without written permission from SDCCD, MOE.

# Supporting Your Friend

We may each experience different emotions upon receiving the results. You can share your friends' joy by congratulating them or give words of encouragement to friends who may be disappointed with their results.



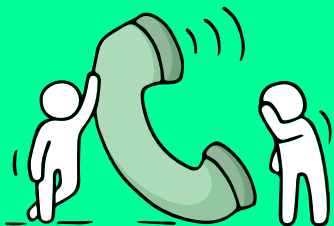
Keep a lookout for your friends in distress. You can support them in the following ways:





# Help is readily available for you.

There are other hotlines and chats available if you are more comfortable seeking help using these platforms.



## SOS

**SOS** provides round the clock emotional support for those in distress, thinking of suicide or affected by suicide. This service is manned by trained volunteers.

Call: **1767** (24-hour helpline)

There are also alternative avenues for emotional support through email and text messaging.

Email: **pat@sos.org.sg**  
(Response within 48 hours)

SOS Care Text: **www.sos.org.sg**  
(6pm – 6am on Mon to Thu and 6pm to 11:59pm on Fri)

## Community Health Assessment Team (CHAT)

If you experience prolonged difficulties, CHAT provides personalised and confidential mental health checks and face-to-face consultation for youth aged 16 to 30. To speak with a youth support worker, you can:

Visit: **CHAT Hub at \*SCAPE, #05-05** or

Call: **6493 6500/ 6501** or

Email: **CHAT@mentalhealth.sg**

# Help is readily available for you.

There are other hotlines and chats available if you are more comfortable seeking help using these platforms.

## eC2

**eC2** is an e-Counselling Centre where you can talk to a trained counsellor about the issues you are facing, right where you are.

Youths may chat with a counsellor online at:  
[www.ec2.sg](http://www.ec2.sg)

Monday – Friday  
(Excluding Public Holidays): 10am – 12pm & 2pm – 5pm

## TOUCHline

**TOUCHline** is a helpline to provide youths with emotional support and practical advice.

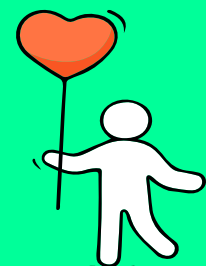
Call: **1800 3772252**

Monday – Friday  
(Excluding Public Holidays): 9am – 6pm

## mindline.sg

**mindline.sg** is an online platform that provides tools, tips and resources to help you manage your health and well-being. Explore and find out how you can improve your mental well-being and support your friends too.

Find out more:  
[www.mindline.sg](http://www.mindline.sg)



# Thinking About Your Next Step?



---

## Who am I?

The more I know about myself, the better my decisions.

---

## Where do I want to go?

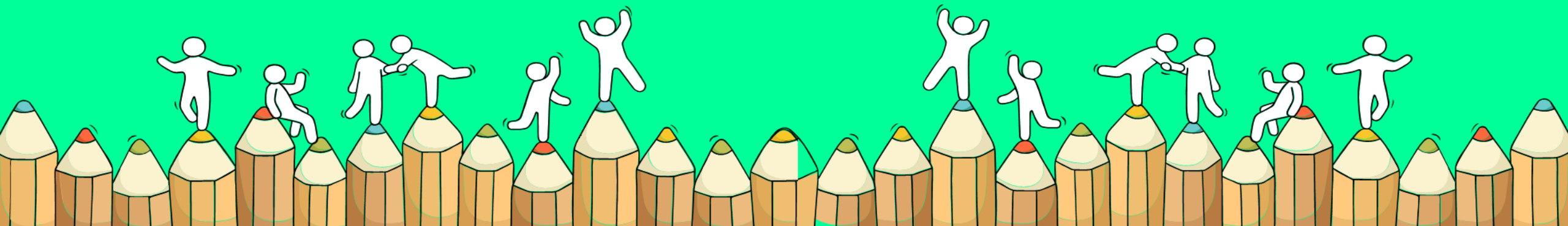
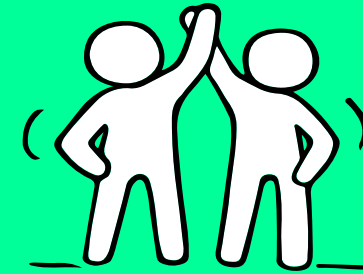
There are many pathways with opportunities for continuous learning and recognition.

---

## How do I get there?

Be resilient, explore various pathways and be open to possibilities.

# Sources of ECG Support





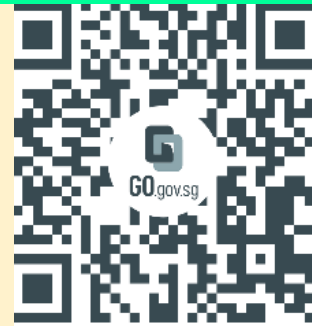
# Help is readily available for you.

## Reach out to an ECG Counsellor!

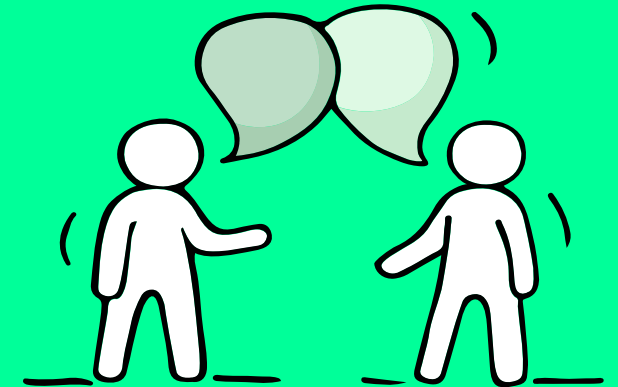
Make an appointment to speak with your ECG Counsellor.

Make an online or phone counselling appointment with the ECG Centre @ MOE (Grange Road) through

<https://go.gov.sg/moe-ecg-centre>

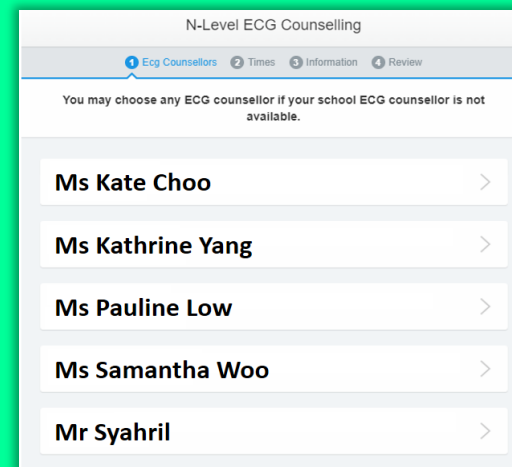


*Is there  
someone we  
can speak with?*



# Booking of Appointment with ECG Counsellor

Go to [go.gov.sg/ecg-bookappt](https://go.gov.sg/ecg-bookappt) to make an appointment (for tomorrow till 22 December 2022). You may choose **any ECG Counsellor**.



1. You will receive an email to confirm the appointment has been made.
2. Depending on the ECG Counsellor you choose, **zoom details for the session** may be sent to you via **email** or **WhatsApp**, before the session.

**IMPORTANT**: To be admitted to the Zoom session, please name yourself in the “< school abbreviation > - <name>” format e.g. **JYS - Sam Ong**

# Resources to help you make informed decisions



## About MySkillsFuture

A one-stop portal that empowers you to embark on a journey of self-discovery and make informed education and career choices. Use the information and tools to explore various education and career pathways, and take charge of your future.

*Where can we find more information?*

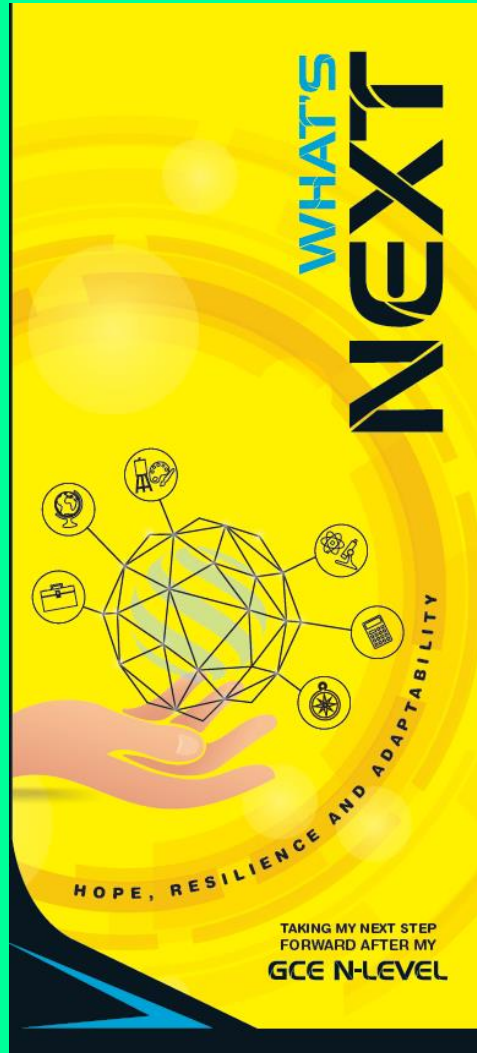


<https://go.gov.sg/mySFsec>

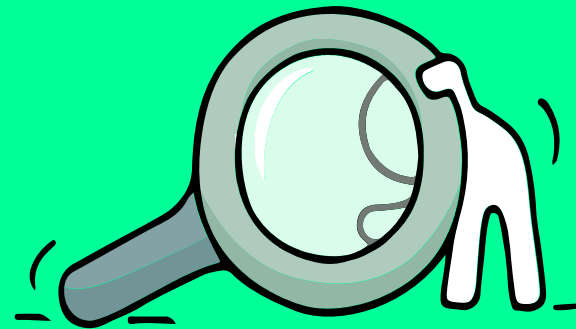


<https://go.gov.sg/mySFsec>

# Resources to help you make informed decisions



*Where can we find more information?*



<https://go.gov.sg/whats-next-nlevel>



<https://go.gov.sg/whats-next-nlevel>



# Post-Secondary Education

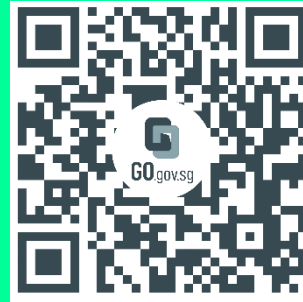
Learn more about the admissions exercises and programmes

<https://moe.gov.sg/post-secondary/admissions>



Learn more about the post-secondary education institutions

<https://moe.gov.sg/post-secondary/overview>





# Unsure of what's next?

Explore different jobs and industries with **On My Way (OMW)**. Find out if your career goal and educational pathway match your interests, values and ambitions.

Get key info on **jobs and industries** that you aspire to enter, with quick FAQs on **how to get there!**



Peek into a day in the life of professionals from various fields with our video series.

Connect with schooling seniors, go on learning journeys, or tune in to our **industry panels**, we've got programmes planned from Nov 2022 to Feb 2023

Go to <https://go.gov.sg/omw-moerrp2023> and let's get you on your way!

**omw**  
on my way

**NYC**  
NATIONAL  
YOUTH  
COUNCIL  
SINGAPORE

**KNOW IT ALL**

COPY URL TO SHARE

### INVESTMENT BANKER

Investment Bankers sell securities and provide strategic advice to their clients. They advise clients on raising funds from the equity/debt capital markets and merger and acquisitions (M&A).

### RESPONSIBILITIES

Advise corporate clients on product offerings, private equity transactions, mergers and acquisitions, and valuations.

Determine the **best strategy** and place to **raise debt or equity capital**.

Prepare necessary documents to **protect the company and investor**.

Ensure all **government regulations have been adhered to**.

Perform financial modelling using valuation methods.

### HARD SKILLS

- Financial Modelling (e.g. DCF, Public Comps, M&A Comps)
- Data Analytics
- Strong Mathematical and Numerical Skills

### SOFT SKILLS

- Influencing and negotiation skills
- Innovative Problem Solving
- Customer Orientation
- Communication



<https://go.gov.sg/omw-moerrp2023>

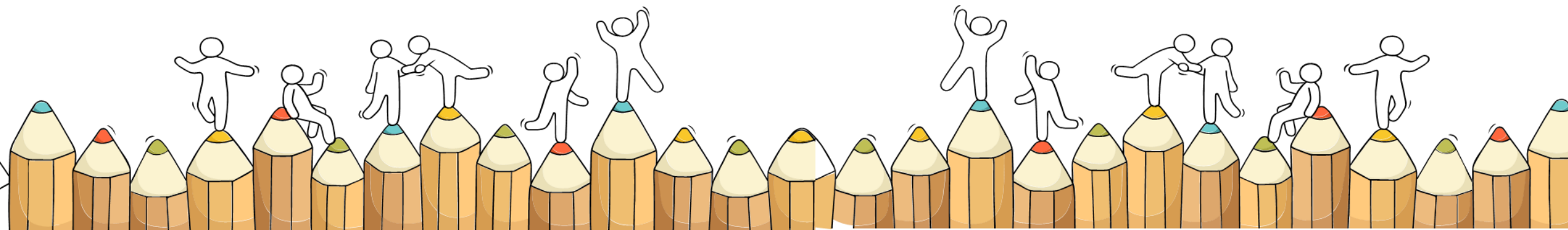
The N-Level is not  
the destination.

It is part of your  
education journey.



# Admission Exercises

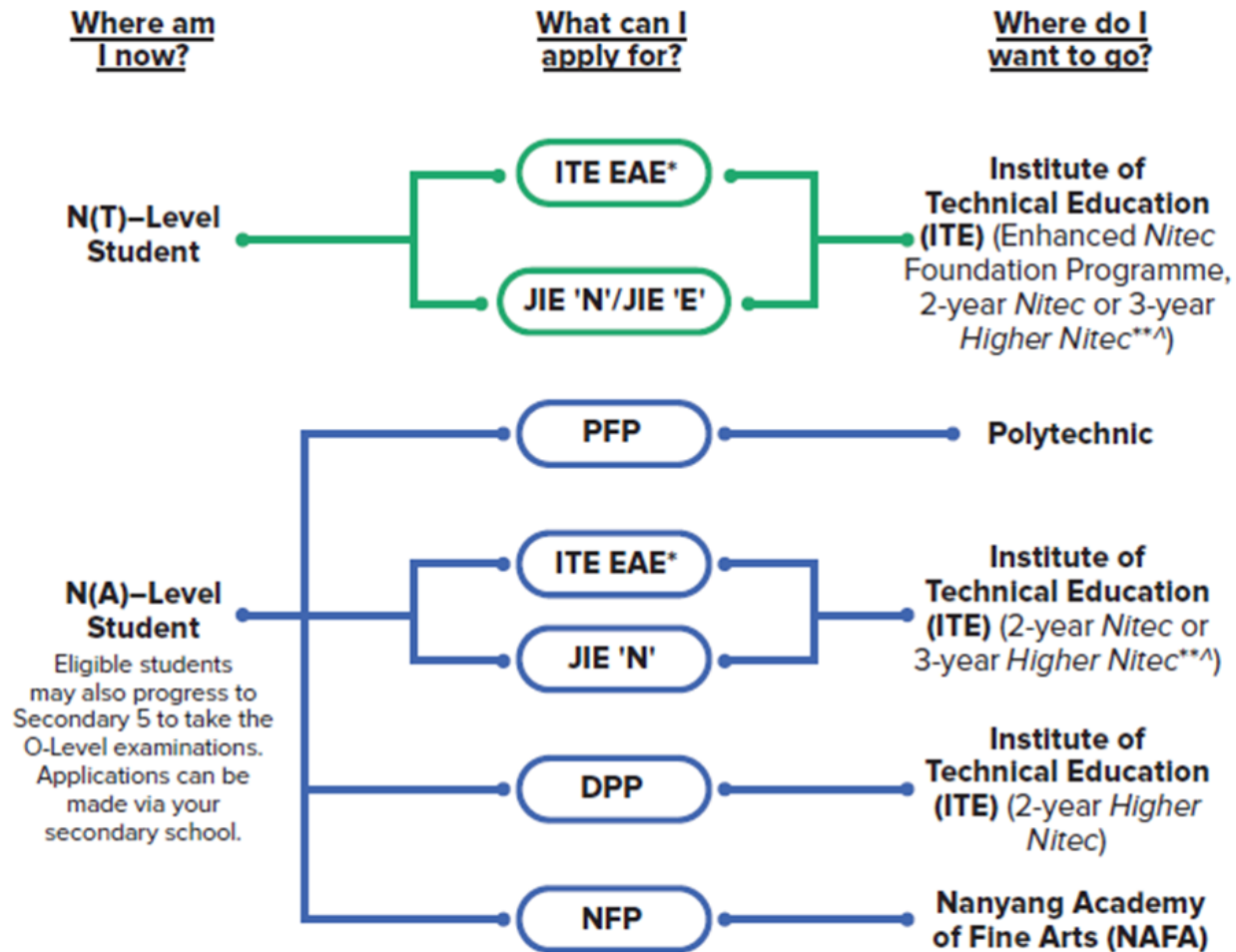
Things to note







## Admissions Exercises for N-Level Students



<https://www.moe.gov.sg/post-secondary/admissions>

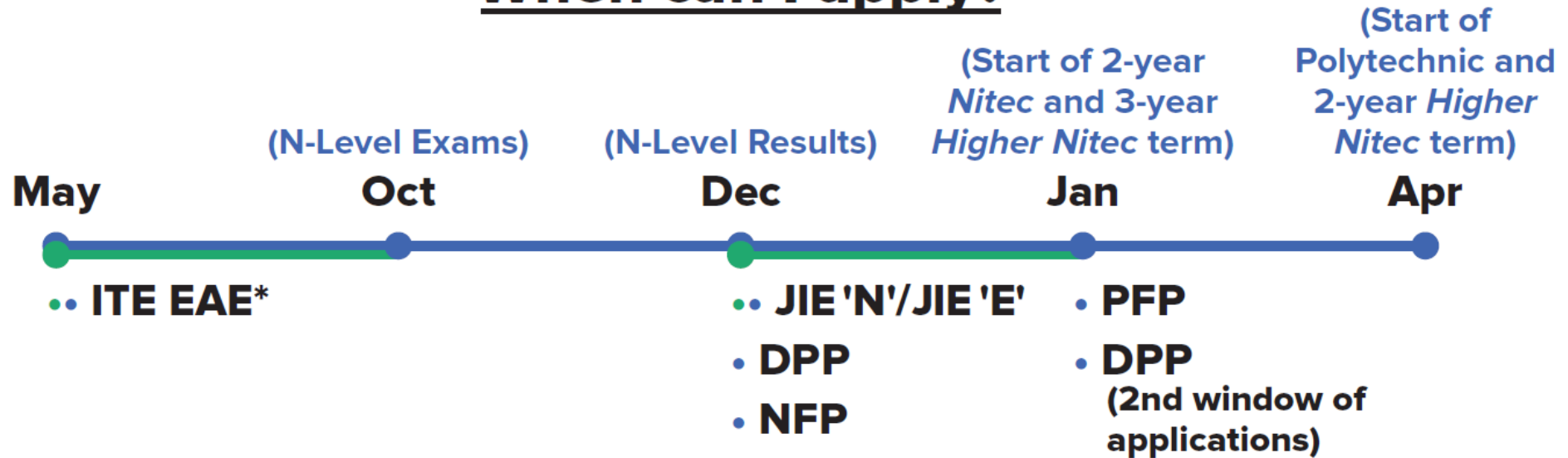


Source: A Guide to Post-Secondary Admissions Exercises

# Admissions Exercises Application Timeline



## When can I apply?



\*Students can apply through these admission exercises before their examinations.

\*\*Certain *Nitec* and *Higher Nitec* courses are available in traineeship mode. For more information on applying to these courses, you can visit <https://www.ite.edu.sg/admissions/traineeship>

^ There are eleven 3-year Higher Nitec courses available for AY2023.

# Details of Admission Exercises (1)



## ITE EAE – ITE Early Admissions Exercise

ITE EAE is an aptitude-based admissions exercise that allows students to apply and receive conditional offers for admission to ITE based on their aptitude and interest, prior to receiving their final GCE N-Level examination results. It allows students to demonstrate their aptitudes and interests apart from academic grades, thus allowing a wider range of talents to be recognised.



[go.gov.sg/iteeae](https://go.gov.sg/iteeae)



## JIE 'N'/JIE 'E' – Joint Intake Exercise

The JIE 'N' is for 2-year *Nitec* or 3-year *Higher Nitec* courses offered by ITE.

The JIE 'E' is for GCE N(T) students to apply for the 3-year *Nitec* course with Enhanced *Nitec* Foundation Programme.



[go.gov.sg/applyjie](https://go.gov.sg/applyjie)

# Details of Admission Exercises (2)



## DPP – Direct-Entry-Scheme to Polytechnic Programme

DPP allows Secondary 4N(A) students to be admitted directly into a two-year *Higher Nitec* programme at ITE without having to sit for the O-Level examinations or undergo a *Nitec* programme.

DPP students who successfully complete their *Higher Nitec* courses at ITE and attain the required qualifying Grade Point Average (GPA) scores are guaranteed a place in a polytechnic diploma course mapped to their *Higher Nitec* course.



[go.gov.sg/applydpp](https://go.gov.sg/applydpp)



## NFP – NAFA Foundation Programme

The NFP is a full-time one-year practice-based programme targeted at N(A) students, to prepare them for the successful enrolment and completion of a diploma programme at NAFA. Students enrolled into the NFP are offered provisional places in their pre-selected diploma courses, and can progress to the first year of the course upon the successful completion of the NFP.



[go.gov.sg/applynafafp](https://go.gov.sg/applynafafp)



## PFP – Polytechnic Foundation Programme

PFP is a one-year programme that offers a practice-oriented curriculum taught by polytechnic lecturers to better prepare polytechnic-bound N(A) students for entry into selected polytechnic diploma courses. PFP students are given provisional places in diploma programmes, subject to them passing all modules in the 1-year PFP.

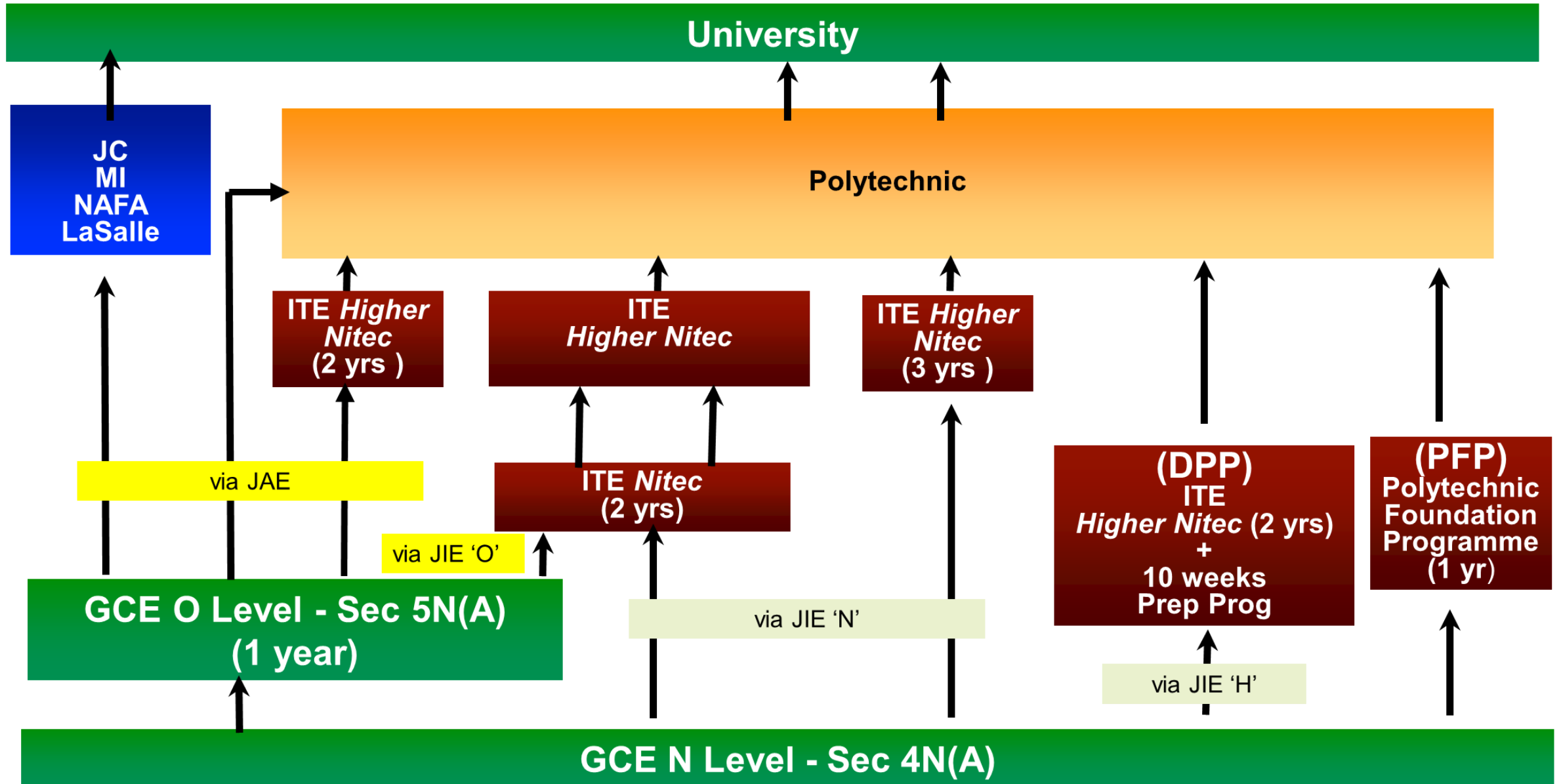


[go.gov.sg/pfp](https://go.gov.sg/pfp)

# Progression Pathway for Sec 4N(T) Students

- Progression to ITE – Nitec **(JIE ‘N’)**
- Sec 4N(T) students with 0 or 1 N(T)-Level subject pass have the option to enrol in the enhanced Nitec Foundation Programme (eNFP), where they will acquire a Nitec qualification at the end of three years. **(JIE ‘E’)**
- The eNFP aims to strengthen students’ literacy and numeracy foundations, to help them successfully complete their Nitec courses.

# Progression Pathway for Sec 4N(A) Students





# Progression Pathway for Sec 4N(A) Students

ELMAB3	Pathways		
<b>ELMAB3 <math>\leq</math> 12</b> (all 5 subjects must be grade 3 or better)	<b>Eligible to be promoted to Sec 5N(A)</b>	<b>ITE DES-to-Poly Prog (DPP) - Higher Nitec</b> (Grade for <u>EL</u> and <u>Maths</u> must be 4 or <u>better</u> )	<b>Polytechnic Foundation Prog (PFP)</b>
<b>ELMAB3 <math>\leq</math> 19</b> (Meet course-specific entry requirements)			<b>ITE – Nitec/ Higher Nitec</b>
<b>ELMAB3 <math>\geq</math> 20</b>	<b>ITE - Nitec</b>		

*Eligibility for 4N(A) repeat will be on a case-by-case basis*

# Computation of ELMAB3

EL - English

MA – Mathematics

B3 - Other Best 3 Subjects

At least Grade 5 or better for all subjects used in computation of ELMAB3

# Polytechnic Foundation Programme (PFP)

- For N(A) students who are academically strong and clearly polytechnic bound
- Suitable for students with blended learning styles (conceptual and applied)
- Application starts after the release of O Level Results in **January**. Students interested in applying PFP **will continue with their Sec 5 education first.**

# ITE DES-to-Poly Prog (DPP)

- Prepares Sec 4N(A) students for progression into selected **polytechnic diploma** courses via a **10-week DPP preparatory** course and **2-year Higher Nitec programme** at ITE
- Students will be **assured of a place in a related Polytechnic Diploma** course if they **meet the qualified criteria** for progression
- Student eligible for DPP will **receive a copy of Form N** as an invitation to apply for DPP. [JIE 'H']

# ITE DES-to-Poly Prog (DPP)

- About 1,200 DPP places are offered across 18 Higher Nitec Courses
- **Advantage** of choosing DPP over Sec 5N
  - Direct entry to Higher Nitec, which is otherwise only available for O-level holders
  - Students assured of 1st year place in related Diploma course, if they **attain** qualifying Higher Nitec GPA scores

For more information on the DPP  
and the PFP, please visit these websites:

Direct-Entry-Scheme to Polytechnic Programme  
(DPP)

<https://www.ite.edu.sg/admissions/full-time-courses/higher-nitec-dpp>

Polytechnic Foundation Programme (PFP)

<https://pfp.polytechnic.edu.sg/PFP/index.html>



# NAFA Foundation Programme for 4NA

- ▷ **Gross ELMAB3 ≤ 15**
- ▷ **English grade ≥ 4**: will be required to attend an interview
- ▷ Must pass an **admission test or audition**, depending on course
- ▷ Applicants may be asked to attend an **interview**
- ▷ Successful: Provisional offer of admission to the diploma courses
- ▷ Successful completion of NFP: Offered a place in chosen diploma
- ▷ **Currently**, students are only allowed to **select 1 course** of choice
- ▷ Please refer to **NAFA website** for application period and other details



**Apply online from 15 to 30 December 2022.**

Link to NAFA NFP page: <https://www.nafa.edu.sg/courses/foundation/nafa-foundation-programme#collapseThree>

# ITE January Intake Exercise

- JIE 'H' – Higher Nitec (DPP)
- JIE 'N' – 2 Years Nitec Course/ 3 Years Higher Nitec Course
- JIE 'E' – 3 Years Nitec Course with Enhanced Nitec Foundation Programme
- Traineeship Programme  
(<https://www.ite.edu.sg/admissions/traineeship>)

# Computation of ITE for Nitec Aggregate N Level Subjects (Based on best 4 subjects)

ITE Aggregate	N(A) Subject	N(T) Subject
1	1, 2	A
2	3	B
3	4	C
4	5	D
5	U	U

# Information For Students on Key Dates for Jan 2023 intake

1. All N(A)\*/N(T) school leavers are encouraged to put in an application during the **1<sup>st</sup> Phase (Main Phase)** between 19 Dec 2022 (2.30pm) to 22 Dec 2022 (5pm). Application results for the 1<sup>st</sup> Phase will be released on 30 Dec 2022 at 9am.
2. If you wish to appeal, please accept the course offered before applying in the **2<sup>nd</sup> Phase (Late Application/Appeal Phase)** between 30 Dec 2022 to 4 Jan 2023. The application results for the 2<sup>nd</sup> Phase will be known on 11 Jan 2023 at 9am.
3. Unsuccessful applicants can appeal under the **3<sup>rd</sup> Phase (Final Top-up Phase)** between 11 Jan to 19 Jan 2023 and 27 Jan to 8 Feb 2023 for courses with vacancies. The application results for the 3<sup>rd</sup> Phase will be known between 16 Jan to 27 Jan 2023 and 27 Jan to 14 Feb 2022.

\*N(A) students progressing to ITE

For further enquiries, N-Level school leavers can contact  
ITE Hotline: 1800-2222-111

# Key Dates for Jan 2023 Intake Exercise (Full-time Nitec Courses)

Key Activity	Period for 2-Year and 3-Year Nitec Courses, and 3-Year Higher Nitec courses	Remarks
<b>1st Phase (Main Phase)</b>		
Application	19 Dec 2022 (2.30pm) to 22 Dec 2022 (5pm)	Apply through the Internet at <a href="https://www.ite.edu.sg">https://www.ite.edu.sg</a> with NRIC / FIN and Date of Birth. You may also apply using SingPass.
Release of Results	30 Dec 2022 at 9am	Check results at <a href="https://istudent.ite.edu.sg">https://istudent.ite.edu.sg</a> with web ID and password
Acceptance of Course Offer Period	30 Dec 2022 to 4 Jan 2023	Accept course offer at <a href="https://istudent.ite.edu.sg">https://istudent.ite.edu.sg</a> with web ID and password
<b>2nd Phase (Late Application/Appeal Phase)</b>		
Application	30 Dec 2022 to 4 Jan 2023	Apply through the Internet at <a href="https://istudent.ite.edu.sg">https://istudent.ite.edu.sg</a> with NRIC / FIN and Date of Birth. You may also apply using SingPass.
Release of Results	11 Jan 2023 at 9am	Check results at <a href="https://istudent.ite.edu.sg">https://istudent.ite.edu.sg</a> with web ID and password
Acceptance of Course Offer Period	11 Jan 2023 to 13 Jan 2023	Accept course offer at <a href="https://istudent.ite.edu.sg">https://istudent.ite.edu.sg</a> with web ID and password
<b>3rd Phase (Final Top-up Phase)</b>		
Application	1 <sup>st</sup> Top-up Phase Application - 11 Jan to 19 Jan 2023 2 <sup>nd</sup> Top-up Phase Application - 27 Jan to 8 Feb 2023	Apply through the Internet at <a href="https://istudent.ite.edu.sg">https://istudent.ite.edu.sg</a> with NRIC / FIN and Date of Birth. You may also apply using SingPass.
Release of Results	1 <sup>st</sup> Top-up Phase - 16 Jan to 27 Jan 2023 2 <sup>nd</sup> Top-up Phase - 27 Jan to 14 Feb 2023	Check results at <a href="https://istudent.ite.edu.sg">https://istudent.ite.edu.sg</a> with web ID and password
Acceptance of Course Offer Period	1 <sup>st</sup> Top-up Phase - 16 Jan to 27 Jan 2023 2 <sup>nd</sup> Top-up Phase - 27 Jan to 14 Feb 2023	Accept course offer at <a href="https://istudent.ite.edu.sg">https://istudent.ite.edu.sg</a> with web ID and password
<b>Jan 2023 Intake Term Commencement Date: 9 Jan 2023</b>		

# Key Pointers for Students on ITE's Joint Intake Exercise (JIE) for Admission to Nitec Courses

ALL N(T) students and N(A) students (who are not progressing to 5N(A) or repeating 4N(A)) are eligible for JIE.

Keen competition for Nitec and Higher Nitec courses, so use all 12 choices wisely!

Participation in Main Phase is key to secure a place in ITE!

If you are keen in the work & learn option, you may consider applying for the ITE Traineeship programme. Do apply in the Main Phase to avoid missing a place in ITE!

If you are unsuccessful in EAE, make sure you apply in Main Phase to avoid missing a place!

If you have received an additional letter, then you are eligible for the 3-year Nitec Programme (eNFP).

If you are eligible for eNFP, make sure you apply for the 2-year Nitec and 3-year Higher Nitec first before applying for eNFP!

The eNFP helps to build the necessary literacy and numeracy foundations that will enable you to successfully complete your Nitec course!

If you are counter-offered a course, accept it first before appealing for another course you may be more interested in!




# Online Application for

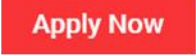
2-Year Nitec and 3-Year  
Higher Nitec Courses

3-Year Nitec Course with eNFP  
(for N(T) courses with 0, 1 pass)

1. Go to <https://www.ite.edu.sg>.

2. Click  icon.

3. Under JIE 'N', click  icon to link to the application website

Under JIE 'E', click  icon to link to the application website

4. At the application website:

- a) Enter NRIC / FIN and Date of Birth to start application. You may also apply using SingPass.
- b) Upon completion of application, applicants will receive their **web ID** and password.

\*Students who are eligible for the 3-Year Nitec Course with eNFP are encouraged to go through **both** JIE 'E' and JIE 'N' e-application process

# Checking of Posting Results/Accept Course Offer

2-Year Nitec and 3-Year  
Higher Nitec Courses

3-Year Nitec Course with eNFP  
(for N(T) courses with 0, 1 pass)

1. Go to <https://istudent.ite.edu.sg>.
2. Enter **web ID** and password.
3. Click '**Self-Service**' followed by '**Student Admission**' followed by '**View Application Results**' to view the application results and to accept course offer.

For more details, please refer to ITE Admission Booklet.

# Please Note the Following:

1. Students who
  - **did not apply** during the 1<sup>st</sup> Phase (Main Phase) **may be contacted by your teachers** to understand your reasons and, where necessary, assist you to complete the ITE application online in the Appeal and Top-Up Phases.
  - applied in the 1<sup>st</sup> Phase (Main Phase) and were **counter-offered courses** may also be **contacted by your teachers** to advise/remind you to accept the counter-offer **before** submitting an appeal.
2. Students who are not enrolled in any course in secondary school or Post-Secondary Education Institutions (i.e. Poly/ITE/NAFA/LaSalle) **by May 2023 may be contacted by MOE** for further support and guidance.

For further enquiries, N-Level school leavers can contact  
ITE Hotline: 1800-2222-111

# For 4N(A) students taking 'O' Level Subject

- Students are allowed to use their school-based O Level Prelim Exam Result to compute their eligibility for **promotion to 5N(A) or retention in 4N(A)** using the conversion below.

School O Level Prelim Grade	N(A) Level Grade
A1, A2, B3	1
B4, C5, C6	2
D7, E8	3
9	4

# Additional Information For Students

Should you require further advice or assistance in your applications or future plans, please contact your teachers and ECG Counsellor.

For further inquiries, you may refer to the following hotlines and links for more information and advice on further education:

Institute of Technical Education (ITE)	
ITE Hotline (for ITE admissions and courses)	1800 2222 111 <a href="mailto:training@ite.edu.sg">training@ite.edu.sg</a>
Education and Career Guidance (ECG)	
ECG Centre @ MOE	<u>6831 1420</u> <a href="mailto:MOE_ECG@moe.gov.sg">MOE ECG@moe.gov.sg</a> e-Appointment: <a href="https://go.gov.sg/moe-ecg-centre">https://go.gov.sg/moe-ecg-centre</a>

# Additional Information For Students

The information listed in the table below will help you to make an informed decision on which choice of courses you could consider applying at ITE.

S/N	Information	Attachment/Link
1	ITE Factsheet 2022	
2	ITE Course Booklet 2023	<a href="https://www.ite.edu.sg/docs/default-source/full-time-courses-doc/ite-course-booklet-2023">https://www.ite.edu.sg/docs/default-source/full-time-courses-doc/ite-course-booklet-2023</a>
3	ITE Traineeship Course Booklet 2023	<a href="https://www.ite.edu.sg/docs/default-source/traineeship/ite-traineeship-e-booklet_2023.pdf">https://www.ite.edu.sg/docs/default-source/traineeship/ite-traineeship-e-booklet_2023.pdf</a>
4	Information on Progression Opportunities (From <i>Nitec</i> Courses to <i>Higher Nitec</i> and Technical Diploma Courses)	<a href="https://www.ite.edu.sg/admissions/full-time-courses/nitec/progression-opportunities">https://www.ite.edu.sg/admissions/full-time-courses/nitec/progression-opportunities</a>
5	Information on Graduate Employment Survey	<a href="https://www.ite.edu.sg/admissions/graduate-employment-survey">https://www.ite.edu.sg/admissions/graduate-employment-survey</a>



# Promotion to Sec 5N(A)

- Students **eligible to be promoted** to Sec 5N(A) are to complete an online form at <https://go.gov.sg/applysec5n2023>.
- For students who are rejecting the offer are also required to **submit the same online form** to indicate your post 4N(A) option at <https://go.gov.sg/applysec5n2023>.
- All forms are to be submitted by [\*\*22 December 2022 \(Thursday\), 12pm.\*\*](https://go.gov.sg/applysec5n2023)



<https://go.gov.sg/applysec5n2023>

*For School Internal Use*

# Retention at Sec 4N(A)

- Students who are eligible to repeat for Sec 4N(A) must submit the online form at <https://go.gov.sg/repeat4n2023jy> by **22 December 2022 (Thursday), 12pm.**



<https://go.gov.sg/repeat4n2023jy>

*For School Internal Use*

# Retention at Sec 4N(A)

- A parent letter and student's reflections are required as part of the submission
- **Students are still required to exercise your JIE application even if you plan to repeat.**
- All online forms, parent letter and student's reflections are to be submitted by **22 December 2022 (Thursday), 12pm.**

# Important information

## Appeal for Review of Results

Appeal Fee - \$112.35 per subject

Deadline for submission - **22 December 2022**

Please collect the form from your Form Teacher

**Outcome of Appeal: 27 January 2023**

# Q&A on

- DPP / PFP
- Progression to Sec 5N
- Admission Exercises

*Please approach the Q&A booth at the back of the hall after the results release.*

# Q&A on

- Choosing ITE courses
- Other ECG support

*Please approach our ECG counsellor Ms Irene Ng at the Meeting Room (next to Conference Room at CCE atrium).*

# All the Best!

