

Welcome Back!

Release of 2025 N-Level Results



1.45pm

- Opening Address by Principal
- Briefing on Post N Level- Progression
- Announcement of School Results

2.00pm

- Returning of Result Slips by FTs

Join our Alumni Community!



bit.ly/jyalumninetwork



We celebrate the sporting
achievements of our
Junyuanites who are awarded
the Singapore Schools Sports
Council Colours

Ng Lei Xuan Jerrine
Sec 4C
Taekwando



SINGAPORE SCHOOLS SPORTS COUNCIL

COLOURS AWARD

Presented to

NG LEI XUAN JERRINE

In recognition of sporting excellence in

TAEKWONDO

On 26th September 2025

A handwritten signature in black ink, likely belonging to Mr. Justin Arul Pierre, the Chairman of the Singapore Schools Sports Council.

Mr Justin Arul Pierre
Chairman
Singapore Schools Sports Council

A handwritten signature in black ink, likely belonging to Mdm Goh Mien Hui Valerie, the Lead Convenor of the Colours Committee.

Mdm Goh Mien Hui Valerie
Lead Convenor
Colours Committee

Character in Sporting Excellence

We celebrate the sporting
achievements of our
Junyuanites who are awarded
the Singapore Schools Sports
Council Colours

Uzair Isyraq Bin
Mohamad Zahirin
Sec 4C
Pencak Silat



SINGAPORE SCHOOLS SPORTS COUNCIL

COLOURS AWARD (DISTINCTION)

Presented to

UZAIR ISYRAQ BIN MOHAMAD ZAHIRIN

In recognition of sporting excellence in


PENCAK SILAT

On 26th September 2025

Mr Justin Arul Pierre
Chairman
Singapore Schools Sports Council

Mdm Goh Mien Hui Valerie
Lead Convenor
Colours Committee

Character in Sporting Excellence

A photograph of a dirt road that splits into two paths, leading towards a bright sun in a cloudy sky. The sun is low on the horizon, creating a strong glow and casting long shadows. The sky is filled with large, dark clouds, and the sun's rays are visible breaking through them. The ground is a light-colored dirt road with visible tire tracks, flanked by green grass. The overall scene is a metaphor for choosing a path or making the most of one's journey.

Making most of your pathways

The 4 years I spent at Junyuan were a defining chapter of growth and discovery for my life. As part of the Media Production Club, I had the privilege of acting as the club's President. And through this experience, I developed a strong sense of leadership, teamwork, and adaptive problem-solving skills that shaped my confidence and independence as a student and person. Junyuan's supportive environment encouraged me to take initiative and to challenge myself through extracurricular opportunities. When I passed my leadership role on to my juniors, I felt proud knowing that the values of creativity and collaboration will continue to flourish onto the next generation of Junyuan students. Junyuan Secondary School is not just a place of learning. It is where students are inspired to learn, grow, and lead.

Jolene Chua Wen Sin

Graduate of Higher Nitec in Events Management, Class of 2025
Year 1, School of Business, Temasek Polytechnic



Thinking about Your Next Step?

Consider these questions...

Who am I?



How Do I Get There?

In the infographic, you can find resources which can help you make informed decisions.

PLANNING YOUR NEXT STEP

These resources will help you chart your path ahead:



• What's Next Brochure

<https://go.gov.sg/whats-next-nlevel>



• Contact the ECG Centre @ MOE

<https://go.gov.sg/moe-ecg-centre>



• MySkillsFuture Student Portal

<https://go.gov.sg/MySFSec>

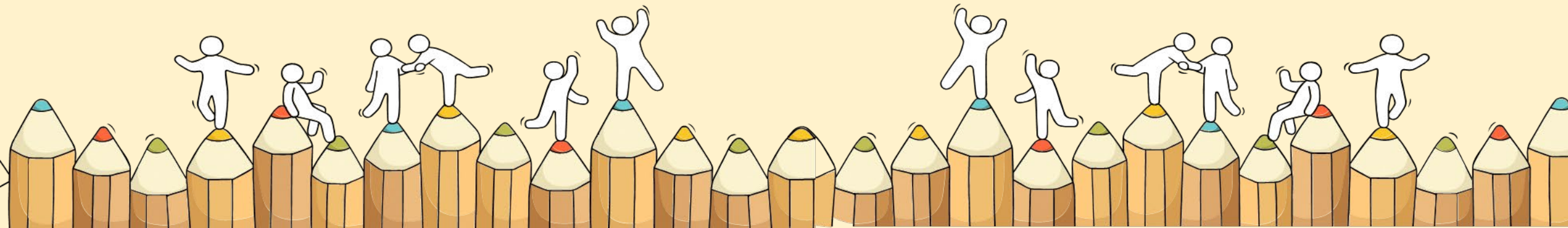


• Chat with your school's ECG Counsellor



Admissions Exercises

Things to note



Details of Admissions Exercises

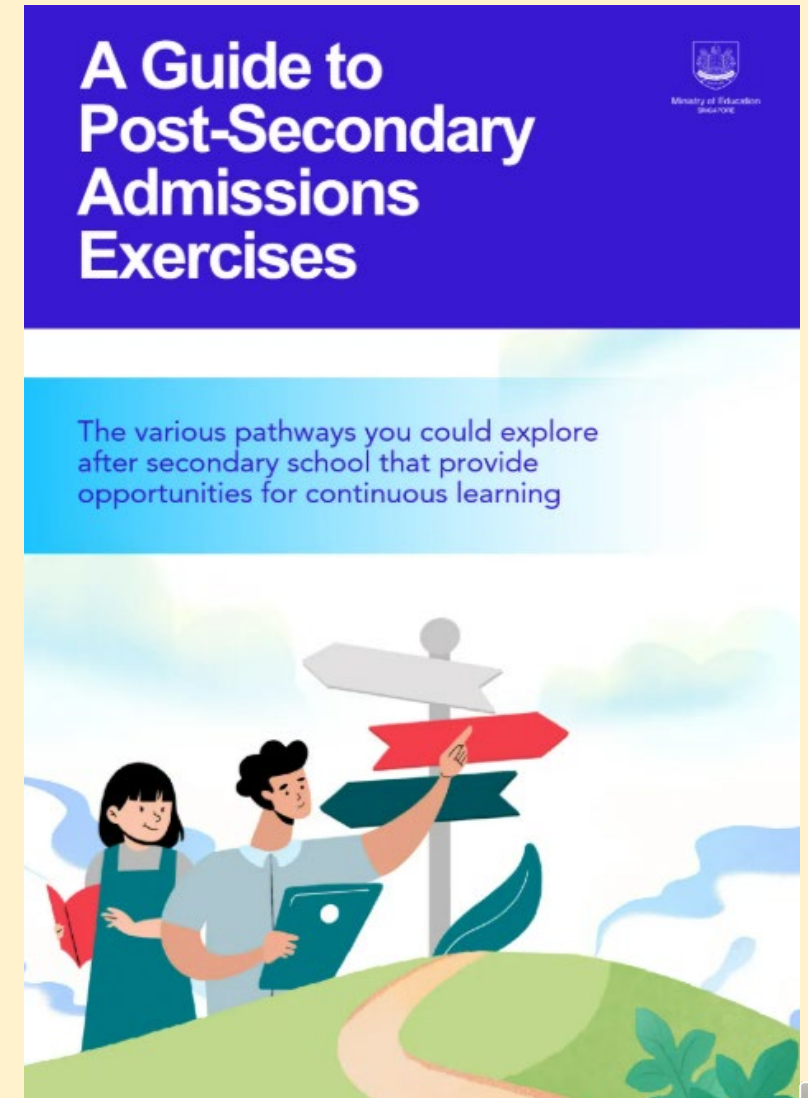
You can find the details of the various admissions exercises in the **Post-Secondary Admissions Exercises booklet** that can be downloaded from:


<https://www.moe.gov.sg/post-secondary/admissions>

- Direct-Entry-Scheme to Polytechnic Programme (DPP)
- Polytechnic Foundation Programme (PFP)
- Joint Intake Exercise (JIE) 'N' / 'E'
- NAFA Foundation Programme (NFP)



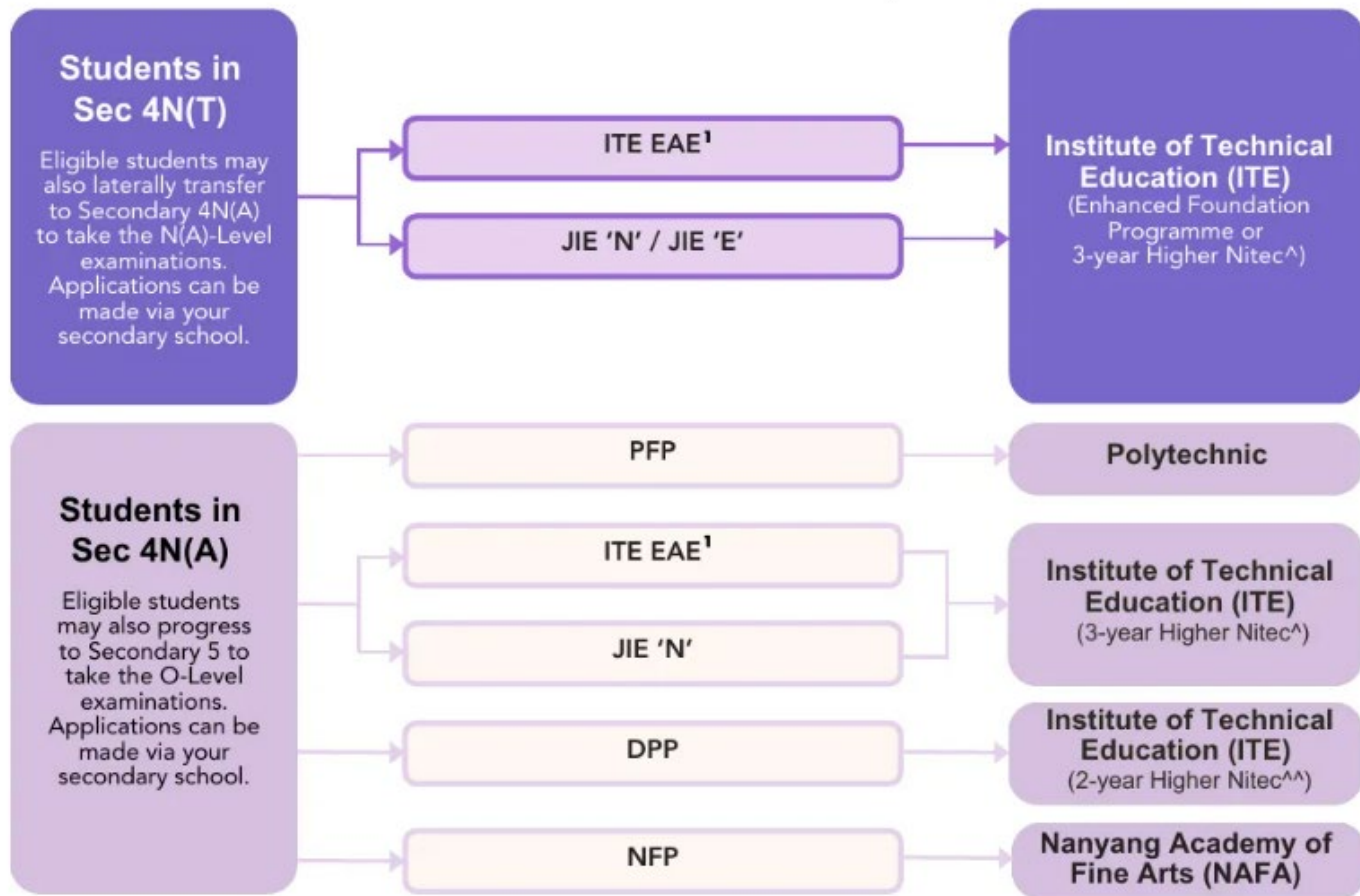
<https://go.gov.sg/moe-postsec-admissions>





Post-Secondary Admissions Exercises for Students in Sec 4 Normal (Technical) and Normal (Academic)

Admissions exercises to take part in










<https://www.moe.gov.sg/post-secondary/admissions>

For more information on applying to these courses, you can visit <https://www.moe.gov.sg/post-secondary/admissions>

For the list of 3-year Higher Nitec courses, please visit <https://www.ite.edu.sg/courses/full-time-courses/nitec-and-3-year-higher-nitec>



Application Period

| Application Period | Dec 2025 | Jan 2026 |
|----------------------|---|---|
| Admissions Exercises | JIE 'N'   JIE 'E'  DPP (1 st window of applications)  NFP  | PFP  DPP (2 nd window of applications)  |



For Students in Sec 4N(T)



For Students in Sec 4N(A)



Details of Admissions Exercises



JIE 'N'/JIE 'E' – Joint Intake Exercise

The JIE 'N' is for students to apply for the 3-year Higher Nitec courses offered by ITE.

The JIE 'E' is for eligible¹ GCE N(T) students to apply for the 4-year Higher Nitec course under the Enhanced Foundation Programme.

JIE 'N'/JIE 'E': go.gov.sg/applyjien

NOTES

¹Singaporean/ Singapore Permanent Resident Normal (Technical) holders with 'O' or '1' GCE 'N' Level pass.

Note: The new enhanced curricular structure integrates Nitec and Higher Nitec curricula allowing students to attain a Higher Nitec qualification directly.

From AY2026 intake, all Nitec courses will be transited to Higher Nitec, and Nitec courses will no longer be offered.

Application Period:

Thu 18 Dec 2025
(2.30pm) to Mon 22
Dec 2025 (5pm)





Details of Admissions Exercises

PFP – Polytechnic Foundation Programme

For Students in Sec 4N(A)

PFP is a one-year programme that offers a practice-oriented curriculum taught by polytechnic lecturers to better prepare polytechnic-bound Secondary 4N(A) students for entry into a polytechnic diploma.

Starting from the AY2026 PFP intake, students will be admitted into a PFP cluster, and progress to one of the diplomas within the cluster after completing the one-year programme.

The exceptions are Diploma in Nursing, Diploma in Early Childhood Development & Education, and Diploma in Tamil Studies with Early Education, for which students can be admitted either via the diploma-specific PFP or the relevant PFP cluster.

PFP: go.gov.sg/pfp

PFP

Entry Requirements:

- Gross ELMAB3 score of 12 points or better (excluding CCA bonus points).
- Need to meet minimum subject-specific requirement. Check the PFP website for info.
- You will receive Form P for PFP application on the O Level results release day.

Application Period: After O Level Results release (Check PFP website in January 2026)



Details of Admissions Exercises



DPP – Direct-Entry-Scheme to Polytechnic Programme

DPP allows Secondary 4N(A) students to be admitted directly into selected 2-year Higher Nitec courses at ITE without having to sit for the O-Level examinations. DPP students who successfully complete their Higher Nitec courses at ITE and attain the required qualifying Grade Point Average (GPA) scores are guaranteed a place in a polytechnic diploma course mapped to their Higher Nitec course.

DPP: go.gov.sg/applydpp

For Students in Sec 4N(A)

DPP / JIE 'H'

Entry Requirements:

- Gross ELMAB3 score of 19 points or less (excluding CCA bonus points).
- Need to meet DPP website for more info. minimum subject-specific requirement. Check the

Application Period: Thu 18 Dec 2025 (2.30pm) to Mon 22 Dec 2025 (5pm)



Details of Admissions Exercises



NFP – NAFA Foundation Programme

For Students in Sec 4N(A)

The NFP is a one-year practice-based programme that prepares Secondary 4N(A) students to pursue a diploma in the creative arts. NFP students who successfully complete the programme will be offered a place in their chosen diploma course at NAFA.

NFP: go.gov.sg/applynafafp

Entry Requirements:

- Gross ELMAB3 score of 15 points or less (excluding CCA bonus points)
- Check the NAFA website for info on portfolio / admission test / interview or audition.

Application Period: Fri 19 Dec 2025 to Fri 26 Dec 2025



Option to 5NA in 2026

Eligibility:

- Gross ELMAB3 score of 19 points or less (excluding CCA bonus points).
- Obtained grade 5 for all subjects included in ELMAB3

Application Period: Thu 18 Dec 2025 (2.30pm) to Mon 22 Dec 2025 (1pm)

School Record Update

Once you have completed your application (JIE-N / JIE-H) **or** intend to opt for 5NA or PFP, please complete the form below.

Deadline: 22 Dec 2025 Mon, 1pm

tinyurl.com/nleveloption25



For students with EAE offers

If you have conditionally accepted an EAE offer and meet the minimum entry requirements,

- You **DO NOT NEED** to complete any JIE-N application as your place in the ITE course has been confirmed.
- However, students who are eligible for DPP or PFP may continue to apply for these admissions using Form N (for JIE-H) or Form P (for PFP)



Important for ALL students

Please complete the School Record Online form once you have completed your ITE/NAFA application or if you intend to opt for PFP / 5NA by **Mon, 22 December 2025, 1pm.**

School Record Update

Once you have completed your application (JIE-N / JIE-H) **or** intend to opt for 5NA or PFP, please complete the form below.

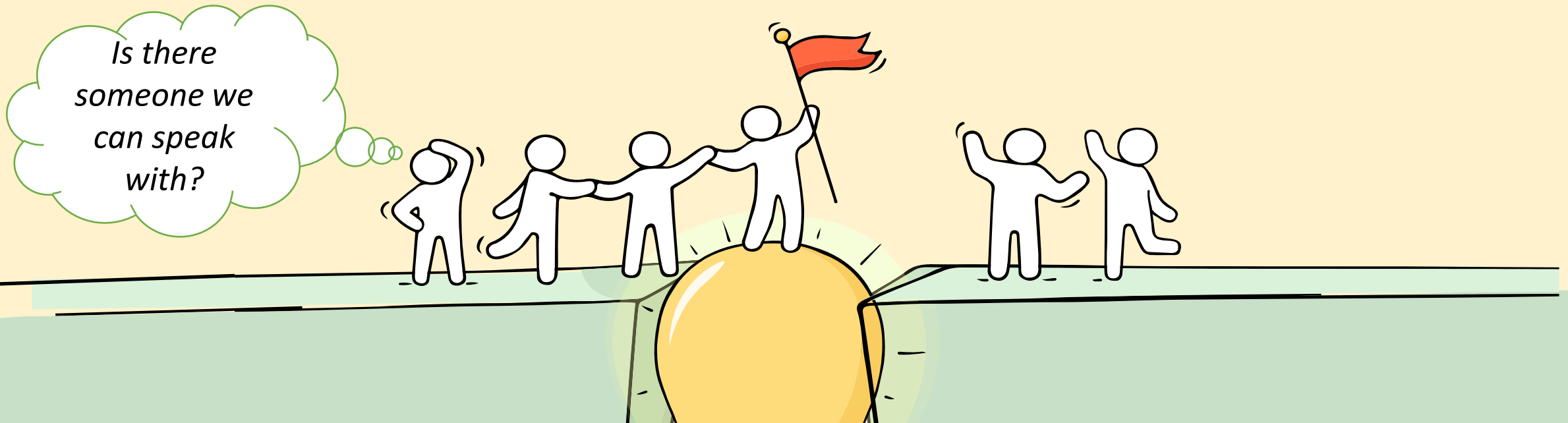
Deadline: 22 Dec 2025 Mon, 1pm

tinyurl.com/nleveloption25



Reaching out for help is a sign of strength, not weakness.

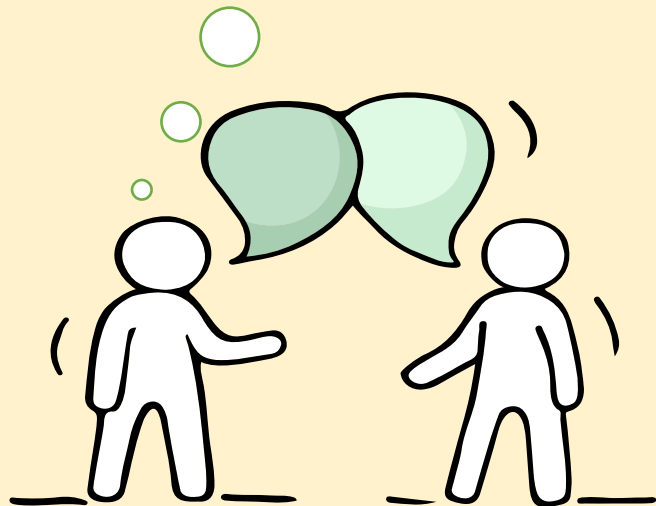
If you have any questions about your options or are not coping well, do reach out to someone you trust and speak with them. It could be a parent/guardian, teacher, ECG Counsellor, School Counsellor or a friend that you can talk to.



Support is readily available for you.

Reach out to an ECG Counsellor!

*Who can we go
to for ECG
advice?*



Meet our ECG Counsellor (Miss Tracy) at the Meeting Room after today's session.

OR

Make an ECG counselling appointment at
go.gov.sg/jysecgbooking



Support is readily available for you.

There are other hotlines and chats available if you are more comfortable seeking help using these platforms. These can also be found in the infographic which you accessed earlier.



SOS provides round-the-clock emotional support for those in distress, thinking of suicide or affected by suicide.

Call: **1767**
(24-hour helpline)

Whatsapp: **9151 1767**
(24-hour Care Text)

TOUCHline is a helpline to provide youths with emotional support and practical advice.

Call: **1800-377 2252**

Monday- Friday (Excluding Public Holidays):
9am – 6pm

Community Health Assessment Team

(CHAT) provides personalised and confidential mental health checks and consultation for youths. To speak with a youth support worker, you can:

Visit: **CHAT Hub at *Scape, 2 Orchard Link, #04-01A**

Call: **6493 6500/ 6501**

Email: **CHAT@mentalhealth.sg**

mindline.sg is an online platform that provides tools, tips and resources to help you manage your health and well-being. Find out more at:
www.mindline.sg



Carey is an online platform by Care Corner that provides free mental health check-ins with mental health professionals. Find out more at:
<https://carey.carecorner.org.sg/>

eC2 is an e-Counselling Centre where you can talk to a trained counsellor about the issues you are facing, right where you are.

Chat with a counsellor at:

www.ec2.sg

Monday – Friday (Excluding Public Holidays):
10am – 12pm & 2pm – 5pm





**The N-Level
examination is not
the end point.**

**It is part of your
education journey.**



wishing
you 
ALL THE BEST

