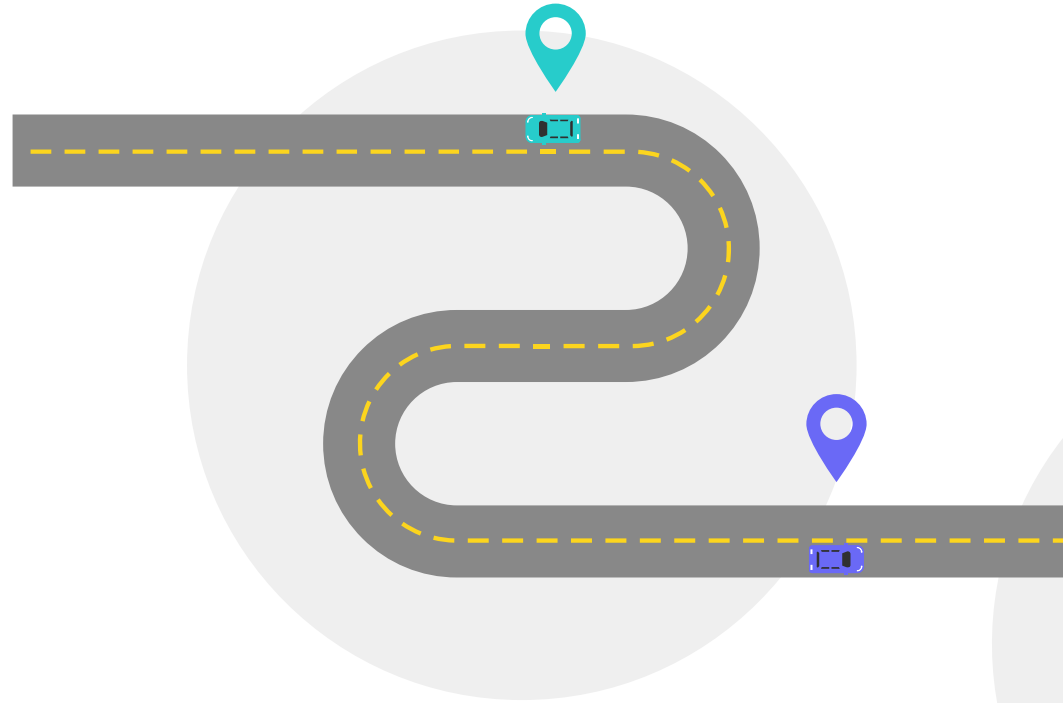


Sec 3 Subject Combination Exercise For 2027



Calendar of Events

Date	Event
5 Jan, 9 Mar	Level Briefing + Education and Career Guidance (ECG) Talk with Sec 2 Cohort
9 Apr	Parents Engagement for Sec 3 Subject Combination
28 Sep – 9 Oct	End of Year Examinations
19 – 22 Oct	Subject Allocation Exercise Briefing for Students
23 Oct – 30 Oct	Subject Allocation Exercise
11 Nov, 5pm	Release of results for Subject Allocation Exercise
11 – 13 Nov, 5pm	Appeal period
16 Nov, 5pm	Release of results for Appeals

The background features several stylized, winding roads in grey with dashed yellow lines. A small orange car is on a road on the left, and a small purple car is on a road on the right. There are also large, light grey circular shapes scattered around the page.

01

Sec 3 Subjects in 2027 and Pre-Requisites

Guiding Principles for subject combinations



**Keys to
open
many
doors**



**Cater to
students'
interests
and
strengths**



**Availability
of staff
and
physical
resource**

Choice

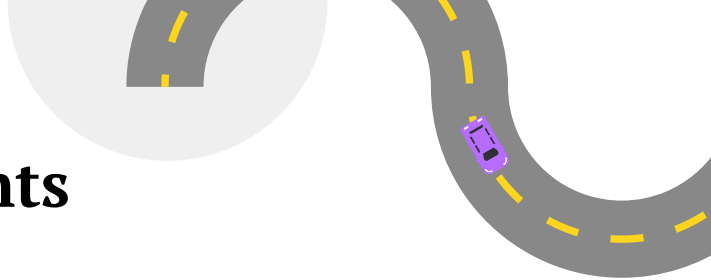
**Subject
Allocation will
be based on**

Merit

**Take up
rate**

How the subject combinations for students taking mostly G3 subjects could look like...

	7 subjects (Double Pure Science)	6 Subjects (More choices for Elective)
1 st	English Language	
2 nd	Mother Tongue Language	
3 rd	Mathematics	
4 th	Hum (Social Studies, Geography) / Hum (Social Studies, History) / Hum (Social Studies, Malay Literature)	
5 th	G3 Chemistry	G3 Sci (Chemistry, Physics) or G3 Sci (Chemistry, Biology)
6 th	G3 Additional Maths	Maths: (G2/3) Additional Maths Humanities: G3 Geography / History / Literature Applied Learning: (G2/3) Art / Computing / Design & Technology / Nutrition & Food Science / Principles of Accounts
7 th	G3 Biology or G3 Physics	



Available Post-Sec Options for students taking **mostly G3 Subjects**

- Junior College (At least 5 G3 Subjects)
- Millennia Institute (At least 5 G3 Subjects)
- Poly Year 1 (At least 4 G3 and 1 G2 Subjects)
- Poly Foundation Programme (G3 subjects are mapped to G2 level)
- Year 2 of 3-year Higher NITEC
- Year 1 of 3-year Higher NITEC

Mother Tongue Language Requirement for JC/MI

Higher Mother Tongue (Only offered at G3)

- G3: A1 – E8

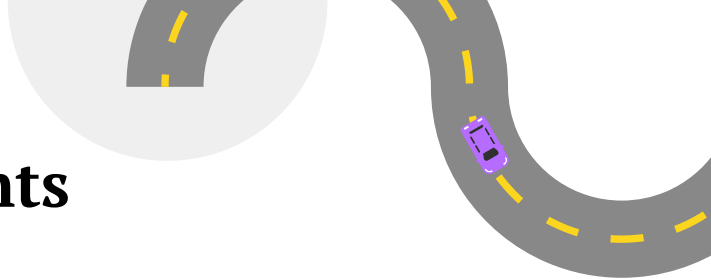
Mother Tongue (Offered at G3, G2, G1)

- G3: A1 – D7
- G2: 1 – 5
- G1: A – D



How the subject combination for students taking mostly G2 subjects could look like...

	6 Subjects
1 st	English Language
2 nd	Mother Tongue Language
3 rd	Mathematics
4 th	Hum (Social Studies, Geography) or Hum (Social Studies, History)
5 th	Sci (Chemistry, Physics) or Sci (Chemistry, Biology)
6 th	Maths: G2 Additional Maths Applied Learning: (G2/3) Art / (G2/3) Design & Technology / (G2/3) Nutrition & Food Science / G2 Computing / G2 Principles of Accounts



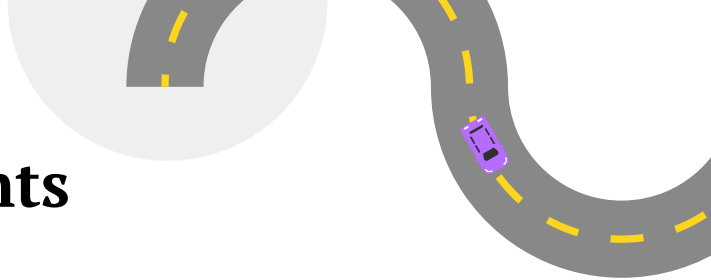
Available Post-Sec Options for students taking **mostly G2 Subjects**

- Poly Foundation Programme (At least 5 G2 Subjects)
- Year 2 of 3-year Higher NITEC (At least 5 G2 Subjects)
- Year 1 of 3-year Higher NITEC

How the subject combination for students taking mostly G1 subjects could look like...

	6 subjects	5 Subjects
1 st	English Language	
2 nd	Mother Tongue Language	
3 rd	Mathematics	
4 th	G1 Computing	
5 th	(G1/G2) Science / (G1/G2) Design & Technology / G2 Art / G2 Nutrition & Food Science	
6 th	G1 Elements of Business Skills*	


*Students exempted from Mother Tongue must take G1 Elements of Business Skills



Available Post-Sec Options for students taking **mostly G1 Subjects**

- **Year 2 of 3-year Higher NITEC
- Year 1 of 3-year Higher NITEC (at least 4 G1 subjects)

*(**Students who offer 4 G1 subjects will join Year 1 of Higher Nitec, and may be offered the accelerated pathway if they meet academic requirements during their Year 1 Semester 1 examinations.)*



Subject Prerequisites (based on S2 Overall)

G3 Subject	Prerequisite	G2 Subject	Prerequisite
Additional Maths	G3 Maths \geq 55	Additional Maths	G2 Maths \geq 55 or G3 Maths \geq 50
Pure Sciences (Bio, Chem & Physics)	G3 Science \geq 55 and G3 Maths \geq 55	Computing	G2 Maths \geq 50 or G3 Maths \geq 45
Computing* (Ngee Ann Sec)	S2 G3 Maths \geq 60 and S1 G3 Maths \geq 65	Principles of Accounts	G2 Maths \geq 45 or G3 Maths \geq 40
Principles of Accounts	G3 Maths \geq 45	G1 Subject	Prerequisite
		EBS	G1 English \geq 50 or G2 English \geq 40

Common Curriculum Subject	G3	G2	G1
Art	Art \geq 70	Art \geq 60	
Design & Technology	D&T \geq 70	D&T \geq 60	D&T \geq 50
Nutrition & Food Science	FCE \geq 70	FCE \geq 60	

*G3 Computing will take place at an external centre on selected afternoons a week. More information will be sent to your email

FAQ

- What is the G3 to G2 or G2 to G1 map conversion score?

Grade mapping table (G3 to G2 to G1)		
G3	G2	G1
A1-B3	1	A
B4-C6	2	A
D7	3	A
E8	4	B
9	5	C
-	6	D
-	-	E

FAQ

- Is Pure Science / A Maths required for JC Admission

Answer: No. Good to have for JC Science Course

REVISED JC ADMISSION CRITERIA

Component	Subject
L1	English / Higher Mother Tongue Language
R1	Best-scoring Humanities subject
R2	Best-scoring Math / Science subject
R3	Any best-scoring Humanities / Math / Science subject
R4	Any other best-scoring subject
Total score ≤ 16	

Mathematics

- Additional Mathematics
- Mathematics

Science

- Biology
- Chemistry
- Physics
- Science (Chemistry, Biology)
- Science (Physics, Biology)
- Science (Physics, Chemistry)

FAQ

- Is A Maths required for Poly Admission

Answer: No

Aggregate Types Computation Criteria				
ELR2B2 : For Polytechnic Courses				
Aggregate Type	ELR2B2-A	ELR2B2-B	ELR2B2-C	ELR2B2-D
EL	English			
R2	1st Group of Relevant Subjects Art Business Studies Combined Humanities Economics Geography Higher Art Higher Music History Humanities (Social Studies, Literature in English) Humanities (Social Studies, Literature in Chinese) Humanities (Social Studies, Literature in Malay) Humanities (Social Studies, Literature in Tamil) Humanities (Social Studies, History) Humanities (Social Studies, Geography) Intro to Enterprise Development Literature in English Literature in Chinese Literature in Malay Literature in Tamil Media Studies (English) Media Studies (Chinese) Music		Additional Mathematics Mathematics	

FAQ

- Is Pure Science required for Poly Admission

Answer: No

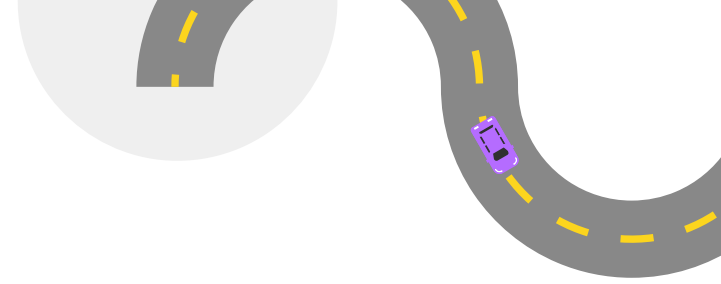
Aggregate Types Computation Criteria

Aggregate Type	ELR2B2 : For Polytechnic Courses			
	ELR2B2-A	ELR2B2-B	ELR2B2-C	ELR2B2-D
2nd Group of Relevant Subjects	Additional Mathematics Art Business Studies Chinese Combined Humanities Creative 3D Animation Design & Technology Design Studies Economics Food & Nutrition/Nutrition & Food Science Geography Higher Art Higher Chinese Higher Malay Higher Music Higher Tamil History Humanities (Social Studies, Literature in English) Humanities (Social Studies, Literature in Chinese) Humanities (Social Studies, Literature in Malay) Humanities (Social Studies, Literature in Tamil) Humanities (Social Studies, History) Humanities (Social Studies, Geography) Intro to Enterprise Development Literature in English Literature in Chinese Literature in Malay Literature in Tamil Malay Mathematics Media Studies (English) Media Studies (Chinese) Music Principles of Accounts Tamil	Art Business Studies Combined Humanities Economics Geography Higher Art Higher Music History Humanities (Social Studies, Literature in English) Humanities (Social Studies, Literature in Chinese) Humanities (Social Studies, Literature in Malay) Humanities (Social Studies, Literature in Tamil) Humanities (Social Studies, History) Humanities (Social Studies, Geography) Intro to Enterprise Development Literature in English Literature in Chinese Literature in Malay Literature in Tamil Media Studies (English) Media Studies (Chinese) Music Principles of Accounts	Biology Biotechnology Chemistry Computing/Computer Studies Creative 3D Animation Design & Technology Food & Nutrition/Nutrition & Food Science Electronics/Fundamentals of Electronics Exercise & Sports Science Physics Science (Chem, Bio) Science (Phy, Bio) Science (Phy, Chem)	Art Biology Biotechnology Chemistry Computing/Computer Studies Creative 3D Animation Design & Technology Design Studies Food & Nutrition/Nutrition & Food Science Electronics/Fundamentals of Electronics Higher Art Media Studies (English) Media Studies (Chinese) Physics Science (Chem, Bio) Science (Phy, Bio) Science (Phy, Chem)

FAQ

- Who should take Pure Science / A Maths?

Answer: Students with a strong passion for STEM and a desire to deepen their understanding in these subjects.



DO TAKE NOTE...

The school reserves the right to decide on the final list of subject combinations to offer after this briefing.

If the number of students choosing a course is very small, there is the likelihood that it may not be offered due to the learning experience of the students being limited, and also teacher deployment constraints.

No changes should be made to these final choices unless a significant learning need is identified.

The background features a white surface with several decorative elements: a large light gray circle in the top left, a smaller light gray circle in the top right, and a larger light gray circle in the bottom right. Three stylized roads, represented by gray paths with dashed yellow center lines, are scattered across the page. One road in the top right has a small purple car icon. Another road in the bottom left has a small orange car icon. A third road is partially visible on the right side.

02

ECG Engagement with Sec 2 Students

Guiding Principles for subject combinations



**Keys to
open
many
doors**



**Cater to
students'
interests
and
strengths**



**Availability
of staff
and
physical
resource**

What subjects to choose?

Interests

What subjects does your child enjoy the most and why?

+

Strengths

What subjects are your child good at?

+

Aspirations

What are your child's education and career goals?

Total Curriculum Load

What is a **suitable number** and mix of subjects can your child manage?



Subject combi and Post-Sec Pathways

Students taking at least	POST-SEC PATHWAYS							
	3-Year Higher Nitec	2-Year Higher Nitec	NAFA Foundation Programme (NFP)	Arts Institutions	Polytechnic Foundation Programme (PFP)	Polytechnic Year 1	Millennia Institute	Junior College
5 G3 subjects	✓	✓	NEW ✓	✓	NEW ✓	✓	✓	NEW ✓
4 G3 + 1 G2 subjects	✓	✓	NEW ✓	NEW ✓	NEW ✓	NEW ✓		
5 G2 subjects	✓	✓	✓		✓			
4 G1 subjects	✓	NEW* ✓						

*Students who offer 4 G1 subjects will join Year 1 of Higher Nitec, and may be offered the accelerated pathway if they meet academic requirements during their Year 1 Semester 1 examinations. This pathway will allow them to attain a Higher Nitec in a shorter duration of about two years.



Education & Career Guidance



1

Discovering Purpose (Who am I?)

The more you know about yourself, the better your decisions will be

2

Exploring Opportunities (Where do I want to go?)

Explore the many education and career opportunities open to you

3

Staying Relevant (How do I get there?)

You can continue to develop yourself by staying adaptable and resilient



Using RIASEC Code: Discovering interests and strengths



The **RIASEC Code** is made up of student's top 3 traits:

- Different people have different career personality types.
- *Using these career personalities, you can identify careers that are likely to be suitable for them.*
- It may reflect career interests, but **it does not define it.**





RIASEC Code and Interested subjects



These are likely subjects students will be interested in based on their RIASEC Code:

Career Personality	Traits	Likely to be interested in
Realistic (The Doer)	<ul style="list-style-type: none"> • Practical, likes hands-on work • Enjoys working with tools/animals/plants 	<ul style="list-style-type: none"> • Mathematics • Pure or Combined Science (Bio/Chem/Phy) • Design & Technology • Nutrition & Food Sciences
Investigative (The Thinker)	<ul style="list-style-type: none"> • Curious and precise • Likes to know why and how things work 	<ul style="list-style-type: none"> • Mathematics • Pure or Combined Science (Bio/Chem/Phy) • Pure or Combined (Geography) • Design & Technology • Computing • Principles of Accounts
Artistic (The Creator)	<ul style="list-style-type: none"> • Curious and precise • Likes to know why and how things work 	<ul style="list-style-type: none"> • Humanities (Geography / History / Literature, Social Studies) • Art • Design & Technology • Elements of Business Skills (EBS)



RIASEC Code and Interested subjects



These are likely subjects students will be interested in based on their RIASEC Code:

Career Personality	Traits	Likely to be interested in
Social (The Helper)	<ul style="list-style-type: none">• Caring, empathetic• Likes helping, guiding and encouraging people• Developing relationships	<ul style="list-style-type: none">• Pure or Combined Science (Biology)• Humanities (Geography / History / Literature, Social Studies)
Enterprising (The Persuader)	<ul style="list-style-type: none">• Energetic. Likes to influence and lead others.• Giving presentations/speeches• Leading and managing people/projects	<ul style="list-style-type: none">• Mathematics• Humanities (Geography / History / Literature, Social Studies)• Elements of Business Skills (EBS)
Conventional (The Organiser)	<ul style="list-style-type: none">• Organised, detail-oriented, systematic• Enjoy working with numbers and managing data• Like structure and predictability	<ul style="list-style-type: none">• Mathematics• Computing• Principles of Accounts

Thank you!

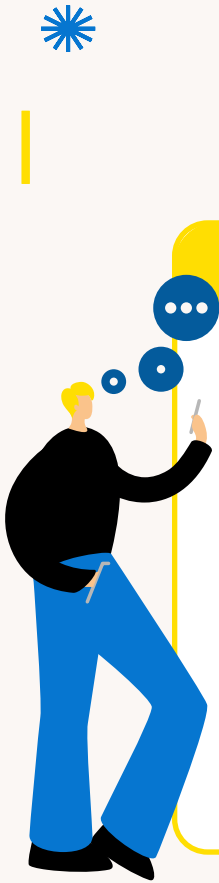
Book an appointment & find out more!



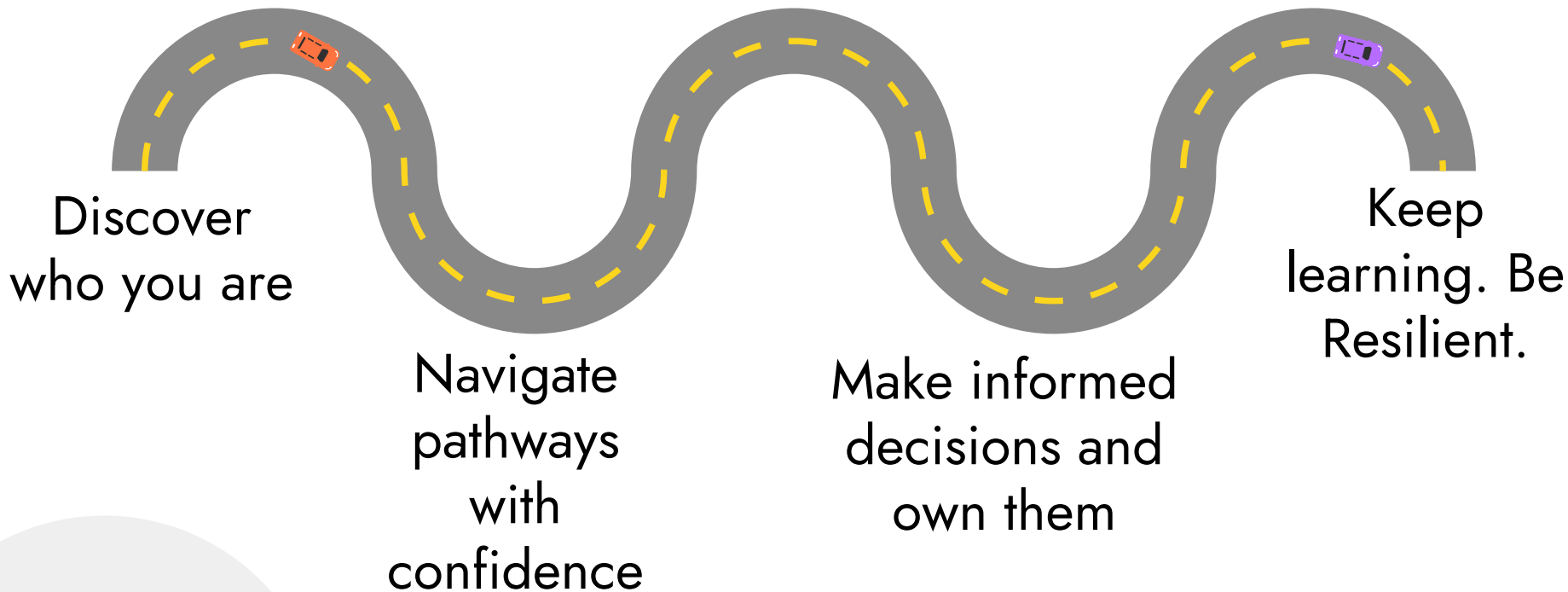
Ms Tracy
Mon & Wed
8am - 5pm



<https://for.edu.sg/ecg-booking-ly55>



Key Education and Career Messages for Students



The background features a white surface with stylized road elements. At the top, there are two grey road curves with dashed yellow lines, and a small cyan car on a straight road segment. At the bottom, there is a small purple car on a straight road segment, and two more grey road curves with dashed yellow lines. Large, light grey circles are partially visible on the left and right sides.

Thank You